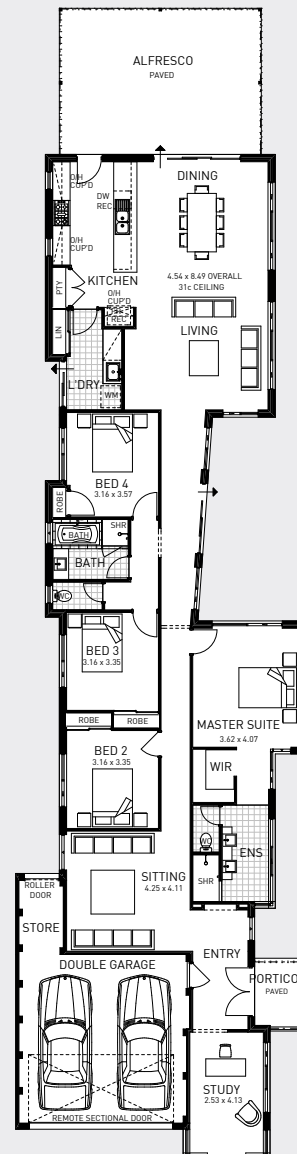




THE ARROSS

Everything about this contemporary narrow-lot four bedroom family home impresses. From its striking street presence and welcoming portico with feature parapet wall to the master bedroom with 5-star ensuite. From the huge open plan living area at the rear of the home to the superbly appointed kitchen with the convenience of direct access to the covered alfresco. Designed with the modern family in mind, the Arross comes with all the comforts you need.

House area	214.29m ²
Garage/store area	39.90m ²
Alfresco area	34.75m ²
Portico area	4.25m ²
Total area	293.19m ²
Perimeter	161.65m
House width	9.96m
House depth	39.39m



**Building
better homes**

SINCE 1903

[w plunketthomes.com.au](http://www.plunketthomes.com.au)

[e ben.leitch@plunkettgroup.com.au](mailto:ben.leitch@plunkettgroup.com.au)

[f facebook.com/Plunkett.Homes](https://www.facebook.com/Plunkett.Homes)